



# Chichewa, Chiyao, English medical vocabulary

Chichewa Chiyao

## Greetings

Hello	Moni	Wawa / Sikomo
Good morning	Mwadzuka bwanji	Adyimwiche uli?
Good morning – (in response) and you?	Ndadzuka bwino, kaya inu?	Njimwiche chenene, kwali wawo?
Good afternoon	Mwaswera bwanji?	Aswelele uli?
Good afternoon – (in response) and you?	Ndaswera bwino, Kaya inu?	Swelele chenene, kwali wawo?
How are you?	Muli bwanji?	Ali uli?
I am fine, and you?	Ndili bwino, kaya inu?	Nili chenene
My name is..	Dzina langa ndi...	Une lina lyangu a...
I am Dr...	Ine ndi Dr....	Une Dr...
What is your name?	Dzina lanu ndi ndani?	Lina lyenu wani?
My name is...	Dzina langa ndi...	Une lina lyangu ni...
Who is this with you?	Mwabwera ndi ndani?	Wali nawowa wani?

## Possible Responses

Mum **Amayi Kusyeto/mama**

Dad **Abambo/atate anga Baba**

Brother **Mchimwene Anene**

Sister **Mchemwali Ayaya**

Grandmother **Agogo aakazi Anganga wakongwe / Anganga.**

Grandfather **Agogo aamuna Anganga walume / Anganga.**

Friend **Nzanga Mdyangu.**

Aunty **Azakhali Baba wakongwe.**

Uncle **Amalume Mdyomba.**



Medic to Medic provide scholarships to trainee health workers in Malawi who are at risk of dropping out of their training due to their backgrounds.

Produced with help from Medic to Medic Students & Alumni. Artistry by Sidy Fall in Dakar, Senegal. If you found this handout useful, please consider making a donation to support Medic to Medic and our ongoing work.

Medic to Medic UK registered CIO 1149904  
[www.medictomedic.org.uk](http://www.medictomedic.org.uk)



# Chichewa, Chiyao, English medical vocabulary

## Types of health worker

Doctor **Dokotala Dokotala**

Nurse **Namwino Anesi**

Midwife **Mzamba Azamba**

Physiotherapist **Dokotala  
wazamafizo Wamafizo**

Pharmacist **Wizamankhwala  
Wakupereka mtera**

Optometrist **Dokotala wa maso  
Wakulora ya meso / dokotala wa  
meso**

Audiologist **Dokotala wa makutu  
Wakulora ya mawiwi**

Clinical Officer **Dokotala  
Dokotala**

Counsellor **Mlangizi Alangisi**



Produced with help from Medic to Medic Students & Alumni. Artistry by Sidy Fall in Dakar, Senegal. If you found this handout useful, please consider making a donation to support Medic to Medic and our ongoing work.

Medic to Medic provide scholarships to trainee health workers in Malawi who are at risk of dropping out of their training due to their backgrounds.

Medic to Medic UK registered CIO 1149904  
[www.medictomedic.org.uk](http://www.medictomedic.org.uk)



# Chichewa, Chiyao, English medical vocabulary

Chichewa Chiyao

## Age

**How old are you?**

**Muli nd dzaka zingati?**

**Akwete yaka ilingwa?**

**How old is? (he/she)**

**Ali ndi zaka zikangati? (mnyamata, mtsikana)**

**Akwete yaka ilingwa?**

**Days Masiku Masiku**

**Weeks Masabata Mlungu**

**Months Miyezi Mwesi**

**Year Chaka Chaka**

**Years Zaka Yaka**

## Numbers

**1 Chimodzi. Chimo.**

**2 Ziwiri. Iwili.**

**3 Zitatu. Itatu.**

**4 Zinayi. Mcheche.**

**5 Zisanu. Nsanu.**

**6 Zisanu ndi chimodzi. Isanu nichimo.**

**7 Zisanu ndi ziwiri. Isanu niwili.**

**8 Zisanu ndi zitatu. Isanu niitatu.**

**9 Zisanu ndi zinayi. Isanu nimcheche.**

**10 Khumi. Likumi.**

## Presenting Complaints

**Why have you come to the hospital today?**

**Chifukwa chani mwabwera kuchipatala lero?**

**Chatendesye kwika kuchipatala akuno nichichi?**

**Do you have a fever?**

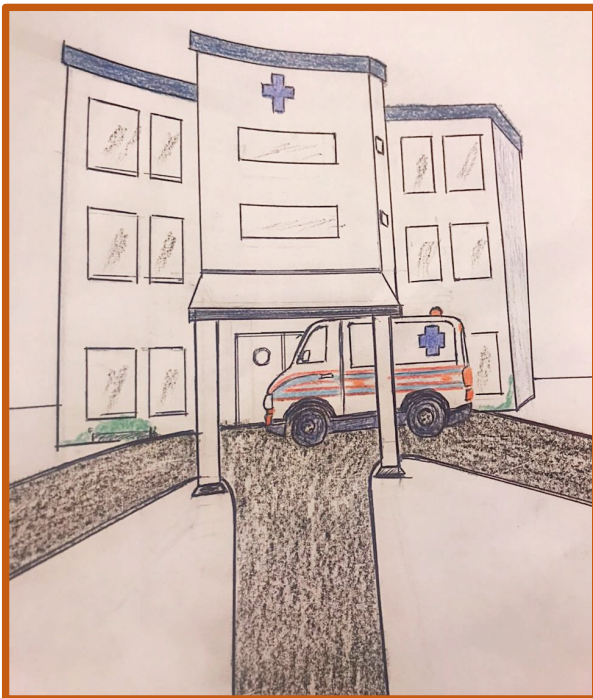
**Mukumva kutentha thupi?**

**Chilu chikutenda motoo?**

**Do you have any general body pains?**

**Mukumva kupweteka m'thupi?**

**Chilu chikuwapweteka?**



Produced with help from Medic to Medic Students & Alumni. Artistry by Sidy Fall in Dakar, Senegal. If you found this handout useful, please consider making a donation to support Medic to Medic and our ongoing work.

Medic to Medic provide scholarships to trainee health workers in Malawi who are at risk of dropping out of their training due to their backgrounds.

Medic to Medic UK registered CIO 1149904  
[www.medictomedic.org.uk](http://www.medictomedic.org.uk)



# Chichewa, Chiyao, English medical vocabulary

Chichewa Chiyao

**Do you have any breathing problem?**

**Mukumavutika popuma?**

**Akuona kusausya pakupumula?**

**Do you have a cough?**

**Mukumakhosomola?**

**Akukosomola?**



**Do you produce sputum when coughing?**

**Mumatulusa makhololo mukamakhosomola?**

**Ana akoposyaga makololo pa kosomola?**

**What is the colour of the sputum?**

**Kodi makhololo ako ndi amtundu wanji?**

**Ana makololo gawo gakuwaga gamtubdu uli?**



**Yellow Chikasu Ga yelo**

**Whitish – Zoyera Geswela**

**Mixed with blood Zophatikizana ndi magari**

**Gewanganichilane ni myasi**



**Do you have asthma?**

**Mumadwala matenda obanika popuma?**

**Akwete lwere wambumu.**

**Do you have any chest pain?**

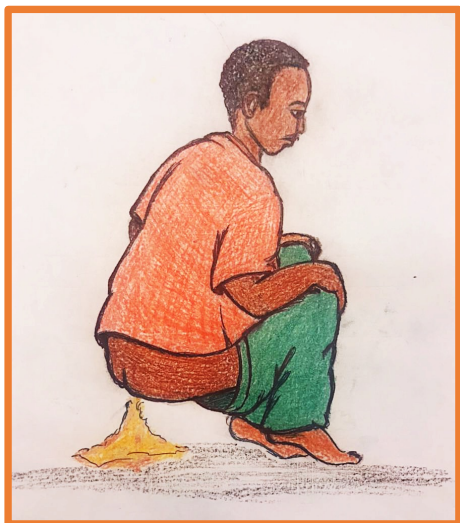
**Pa mtima pakumapweteka?**

**Akupikana kupweteka pa mtima?**

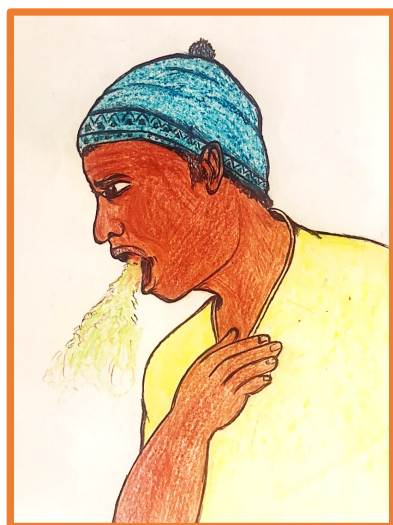
Medic to Medic provide scholarships to trainee health workers in Malawi who are at risk of dropping out of their training due to their backgrounds.



# Chichewa, Chiyao, English medical vocabulary



**Do you have any vomiting?**  
Mukumasanza? Akutapikaga?



**Do you have any bleeding? Mukutaya magazi? Akwasa myasi?**  
Where? Kuti? Kwapi?

Produced with help from Medic to Medic Students & Alumni. Artistry by Sidy Fall in Dakar, Senegal. If you found this handout useful, please consider making a donation to support Medic to Medic and our ongoing work.

## Chichewa Chiyao

**Do you have any diarrhea?**  
Kutsegula m'mimba?  
Akwugula mmatumboo?

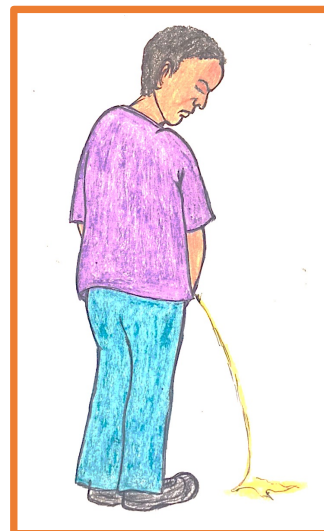
**Do you have any constipation?**  
Mukumavutika popanga chimbudzi?  
Akulepera kwaula kuchimbuzi?

**Do you have any abdominal pain?**  
M'mimba mukumapweteka?  
Akupikana kupweteka mmatumboo?

**Do you have any weight loss?**  
Mukuona kuti mwachepa thupi?  
Aganjire?

**Do you have any pain passing urine?**  
Mukumamva kupweteka pokodza?  
Akupikana kupweteka pakutunda?

**Do you have urinary frequency?**  
Mukumakodza pafupipafupi?  
Akutundaga pafupipafupi?



Medic to Medic provide scholarships to trainee health workers in Malawi who are at risk of dropping out of their training due to their backgrounds.



# Chichewa, Chiyao, English medical vocabulary

Chichewa Chiyao

**Do you have a headache?**

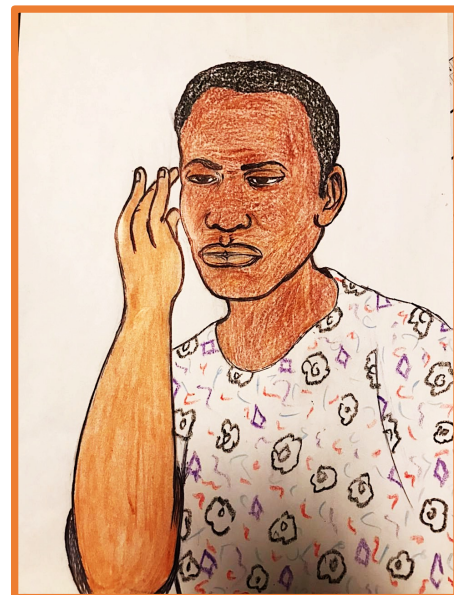
**Mutu ukumapweteka?**

**Mtwee ukwapwetekaga?**

**Do you have any dizziness?**

**Mukumaona chizungulire?**

**Akolaga lisyungusyungu?**



**Do you have any ear ache?**

**Mukumva kupweteka m'khutu?**

**Liwiwi likuwapwetekaga?**

**Do you have any sore throat?**

**Pakhosi pakumapweteka?**

**Akupikanaga kupweteka kungulo?**

**Do you have any tooth ache?**

**Dzino likumapweteka?**

**Lino likuwapweteka?**



**Can you describe your pain?**

**Mungandifotokozere ululu wanu?**

**/ Mukumamva kupweteka motani?**

**Akupikana kupweteka mwa mtundu uli?**

**Cramping kupotokola katanya**

**Sharp kubaya kutota**

**Dull kupwetekera chamkati mkati**

**Achey kupweteka**

**How long have you had this?**

**Mwakhala mukudwala nthawi yayitali bwanji?**

**Yereyi yatandiche chaka chi?/yeleyi itendekwe kwamasiku galingwa?**

Produced with help from Medic to Medic Students & Alumni. Artistry by Sidy Fall in Dakar, Senegal. If you found this handout useful, please consider making a donation to support Medic to Medic and our ongoing work.

Medic to Medic provide scholarships to trainee health workers in Malawi who are at risk of dropping out of their training due to their backgrounds.

Medic to Medic UK registered CIO 1149904  
[www.medictomedic.org.uk](http://www.medictomedic.org.uk)

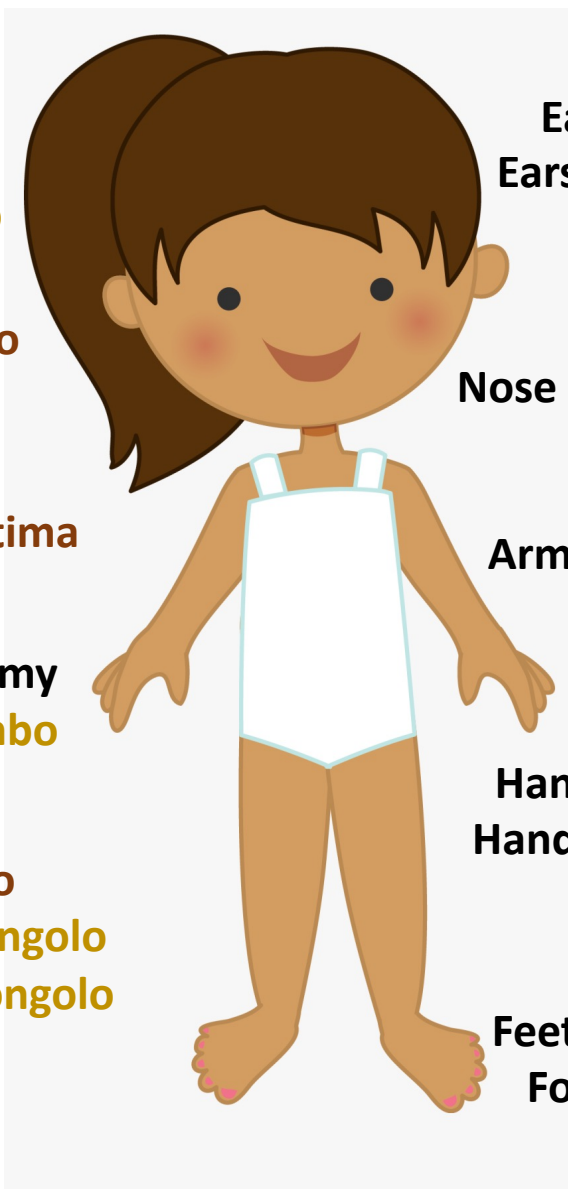


# Chichewa, Chiyao, English medical vocabulary

Chichewa Chiyao

## Body Parts

### Head Mutu Mtwe



Eye Diso Liso  
Eyes Maso Meso

Ear Khutu Liwiwi  
Ears Makutu Mawiwi

Mouth Mulomo  
Pakamwa

Nose Mphuno Mbula

Chest Pa mtima

Arms Mikono Mikono  
Arm Mkono

Abdomen / tummy  
m'mimba Lutumbo

Hand Dzanja Ligasa  
Hands Manja Magasa

Legs Miyendo  
Makongolo / Ngongolo  
Leg Mwendo Lukongolo

Feet Mapazi Makawu  
Foot Phazi Likawu

Left Kumanzere Kumchiji

Right Kumanja Kumlyo

Medic to Medic provide scholarships to trainee health workers in Malawi who are at risk of dropping out of their training due to their backgrounds.

Medic to Medic UK registered CIO 1149904  
[www.medictomedic.org.uk](http://www.medictomedic.org.uk)



# Chichewa, Chiyao, English medical vocabulary

Chichewa Chiyao

## Past Medical History

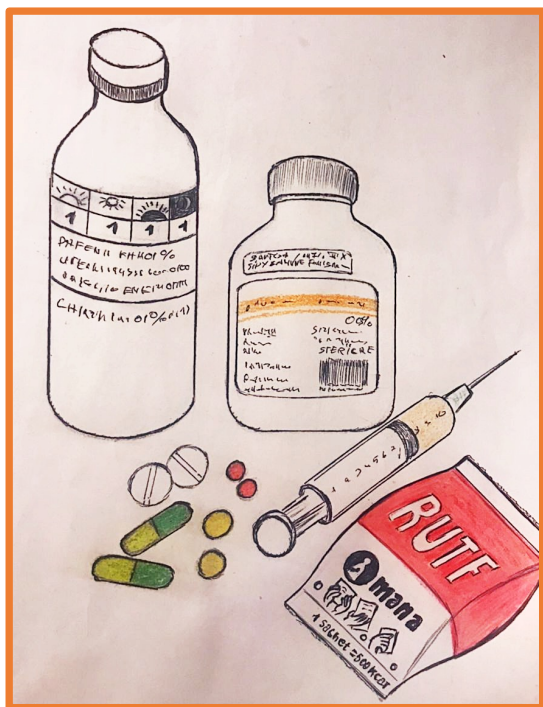
Have you ever had any operations before?  
Munayamba mwapangidwapo opelashoni?  
Pakwete patendejwe upalashoni?

Munayamba mwapezekapo ndi kachilombo ka HIV / TB kapena chifuwa chachikulu?  
Akwete HIV, pakwete Palwasile TB?

Have you ever had high blood pressure?  
Munadwalapo matenda othamanga magazi n'thupi?  
Pakwete papatiche ni ulwere wa BP?

Have you ever had any problems with sugar?  
Munayamba mwadwalapo matenda okwera kwa suga n'thupi?  
Pakwete papatiche ni ulwere wasuga?

## Drug History



Do you take any medication?  
Mukumwa mankhwala alionse?  
Pana mtela ulionse wakumwa?

Are you allergic to anything?  
Pali chinthu chilichonse chomwe chimakuwengani?  
Pana yindu yisawenga?

## Family History

Does anyone in your family have...?  
Alipo aliyense kunyumba amene akudwala chifuwa chachikulu kapena kachilombo ka...?  
Ku mtundu wenu apali wakwete...?

Medic to Medic provide scholarships to trainee health workers in Malawi who are at risk of dropping out of their training due to their backgrounds.

Produced with help from Medic to Medic Students & Alumni. Artistry by Sidy Fall in Dakar, Senegal. If you found this handout useful, please consider making a donation to support Medic to Medic and our ongoing work.

Medic to Medic UK registered CIO 1149904  
[www.medictomedic.org.uk](http://www.medictomedic.org.uk)





# Chichewa, Chiyao, English medical vocabulary

Chichewa Chiyao

## Social History



**Do you drink alcohol?**

**Mumamwa mowa?**

**Asamwaga ukana?**

**How much alcohol do you drink?**

**Mumamwa mowa ochuluka bwanji?**

**Asamwana ukana wejinji atamose panand?**

**What do you do for a living?**

**Mumagwira ntchito yanji?**

**Asatendaga chichi kuti apati yindu yakusosegwa pa mlango?**

**Have you ever smoked?**

**Munayamba mwasutapo?**

**Asakwembaga sona?/pakwete pakwembile sona?**

**Thank you Zikomo Sikomo**

**Sorry Pepani Pepani**

**Please Chonde Chonde**



Produced with help from Medic to Medic Students & Alumni. Artistry by Sidy Fall in Dakar, Senegal. If you found this handout useful, please consider making a donation to support Medic to Medic and our ongoing work.

Medic to Medic provide scholarships to trainee health workers in Malawi who are at risk of dropping out of their training due to their backgrounds.

Medic to Medic UK registered CIO 1149904  
[www.medictomedic.org.uk](http://www.medictomedic.org.uk)



# Chichewa, Chiyao, English medical vocabulary

Chichewa Chiyao

## Additional useful terms

**Can I examine you?**

**Nditha kukuyezani m'thupi?**

**Yakomboleka kuti nalinje/napime?**

**Sit up for me Khalani Atame pasi**

**Lie down for me Mukhale chogona Agone pasi**

**Does this hurt?**

**Ndikapanga chonchi mukumva kupweteka?**

**Ayi ikupweteka?**

**I would like to discuss your results.**

**Ndikufuna ndikambirane nanu za zotsatira.**

**Ngusaka nasalile ituisimene**

**You need to take this medication.**

**Mukuyenera kumamwa mankhwala awa.**

**Akusosegwa kumwa ntela awu.**

**I need to take some blood tests.**

**Ndikufunika ndikuyezeni magazi.**

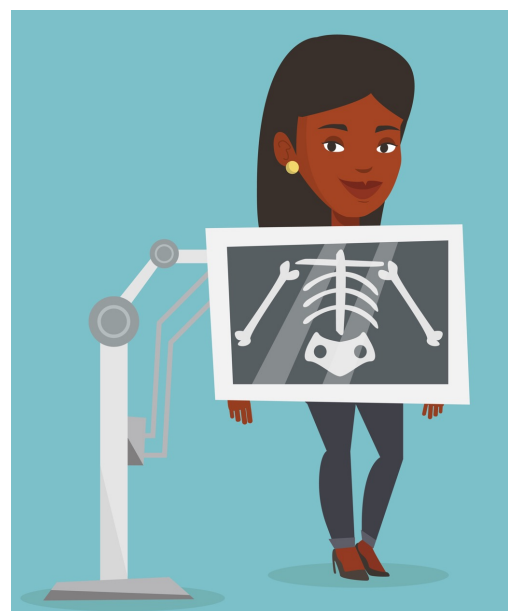
**Ngusaka nalinje myasi.**



**I will arrange an x-ray.**

**Ndikonza kuti akakujambuleni pachifuwa.**

**Chajambulisyé x-ray**



Medic to Medic provide scholarships to trainee health workers in Malawi who are at risk of dropping out of their training due to their backgrounds.



# Chichewa, Chiyao, English medical vocabulary

Chichewa Chiyao

## useful day to day terms

**Where is the toilet? Chimbudzi chili kuti? Ana chimbusi chili kwa?**

**Where are you from? Mumachokera kuti? Kumangwawo kwapi?**

**I am from.... Ndimachokera ku...**

**Where do you work? Mumagwira ntchito kuti? Akamula masengo kwapi**

**How much is that? Ndizingati zimenezo? Ayo akutenda uli?**

**Can you reduce the price? Mungachepeseko mtengo? Andyochesye panandi?**

**I would like to buy.... ndikufuna kugula.... Ngusaka sume..**

**Water Madzi Mesi**

**Eggs Madzira Mandanda**

**Egg dzira**

**Rice Mpunga Mpunga**

**Chicken Nkhuku Nguku**

**Vegetables Masamba Liponda/masamba**

**What time is it? Nthawi ili bwanji? Ndawi dyili uli?**

**Goodbye Tionana Ngwaula**

**See you Tionana Tuonegane**

**Go well/ nice journey Ulendo wabwino Adyende chenene**

**Want to practice  
your Chichewa or  
Chiyao?**

We can arrange sessions for you over Zoom with one of our students. The charge is £5 per session. This is split equally with the student tutor. This helps us with our ongoing fundraising and gives opportunities for students to earn additional income.

**Get in touch:**

[info@medictomedic.org.uk](mailto:info@medictomedic.org.uk)

Medic to Medic provide scholarships to trainee health workers in Malawi who are at risk of dropping out of their training due to their backgrounds.

Medic to Medic UK registered CIO 1149904  
[www.medictomedic.org.uk](http://www.medictomedic.org.uk)